

A close-up, low-angle shot of a MIRATECH MIRA Spin Riveting Machine nozzle. The nozzle is dark, metallic, and has a conical shape that tapers towards the bottom. It is illuminated from the side, creating a bright highlight on its surface and casting the rest into deep shadow. The background is dark and out of focus, showing some mechanical details of the machine.

***Quiet, Rigid, Precise,  
and Reliable***

**MIRATECH**

***MIRA Spin Riveting Machine***

***"The culmination of solid technological strength! With low cost!  
The spin riveting machine has been developed for installation to special machines."***

## Reliable point ①

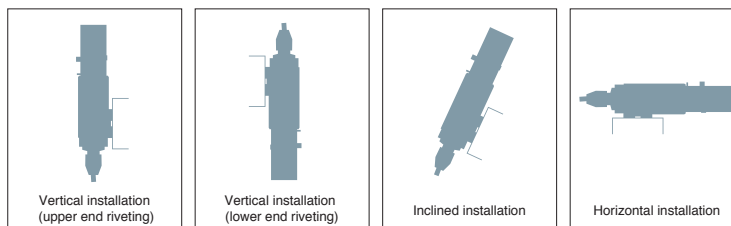
### Widely used in parts manufacturing applications.

It is the proof of the recognized skills we have accumulated in manufacture of riveting equipment for various parts including automobile seat frame components.

## Reliable point ②

### Can be incorporated in a special-purpose machine.

The spin riveting machine is so designed and manufactured that it can be easily incorporated in a variety of special-purpose machines. Flexible installation is possible, including vertical, horizontal, and inclined.



## Reliable point ③

### We are also focused on after-sales service.

We are engaged in proactive proposing activity while valuing the entire process of making our customers satisfied.

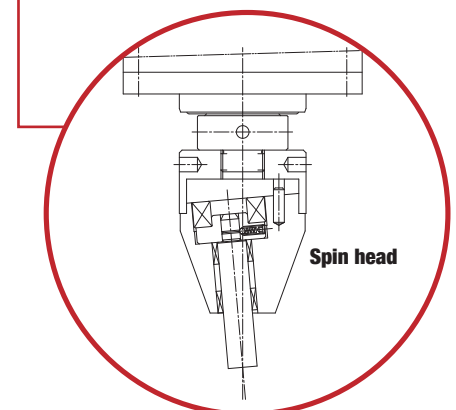
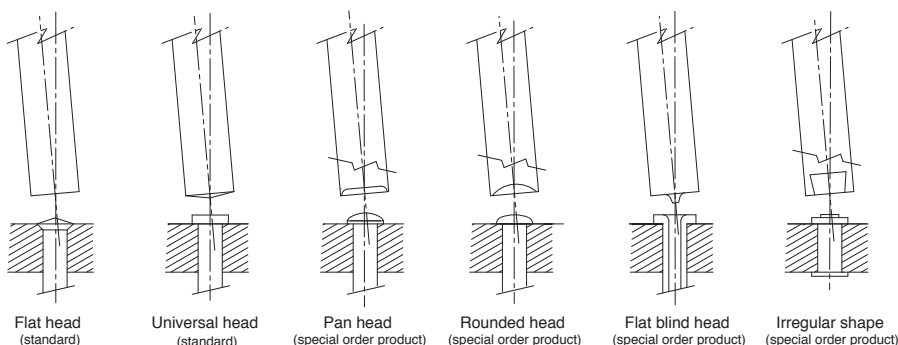
### ***Low-noise and precise riveting is the fruit of our technical staff's ceaseless efforts.***

The spinning forming technology has been adopted to combine a quiet working environment and a stable riveting process. The wobbling movement of the insert punch enables large diameter riveting with a low thrust force.



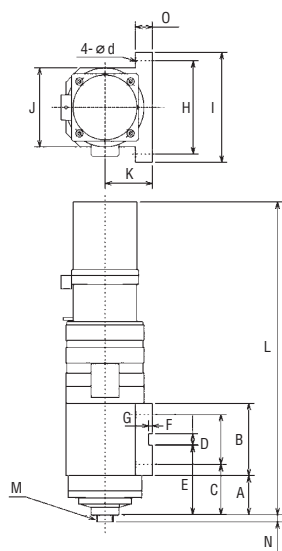
- Shaft thickening is reduced and link swiveling is possible after riveting.
- The stroke is adjustable in 0.1 mm increments using the dial provided on the main body.
- Two types of strokes, 50 mm and 70 mm, are available.
- A riveter with a 2-3 level height lock is also provided.  
(For 4 or more level of height lock, please consult us.)
- Two types of riveting angles, 5° and 3°, are available.
- For intricately-shaped riveting, please contact us.

Various rivet profiles

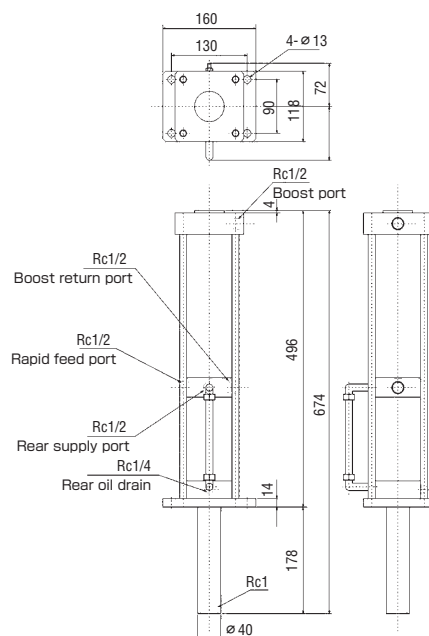


## Major dimensions

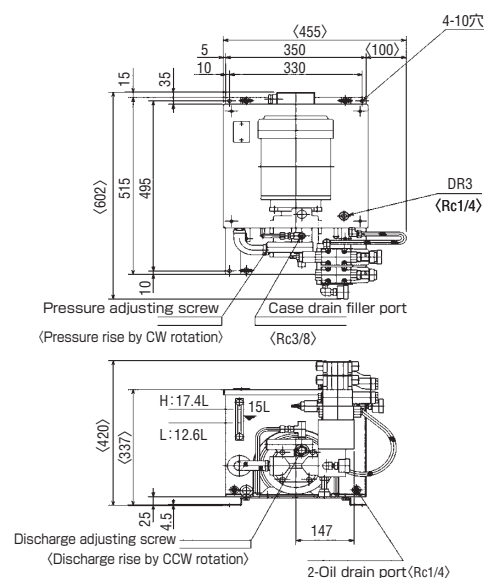
Main body of riveting machine



Air hydraulic booster



Hydraulic unit



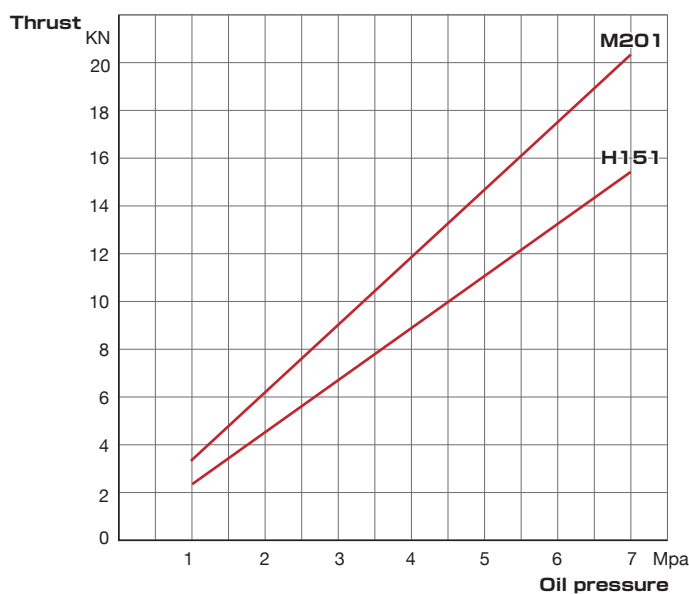
MODEL	A	B		C	D	E	F	G	H	I	J	K	L		M	N	O	Ød
		50st	70st										50st	70st				
S081	70	160	—	90	120	140	20	6.5	180	210	145	115	732	—	M24 P1.5	12	20	13
S301	121	215	—	151	155	219	20	6.5	235	270	198	165	1032	—	M36 P3.0	15	30	18
H151	70	128	148	84	100	124	20	6.5	170	195	140	85	591	651	M24 P1.5	12	30	14
M201	70	128	148	84	100	136	20	6.5	170	195	140	85	655	715	M24 P1.5	12	30	14

## Rivet head thrust chart

[Air hydraulic booster]



[Oil pressure]



## ■ MIRA Spin Riveting Machine Spec Data

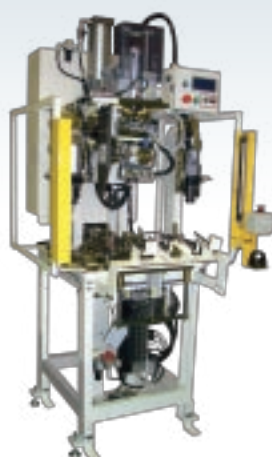
Specifications	Air hydraulic type		Hydraulic type	
	S081	S301	H151	M201
Riveting capacity (mild steel, overall diameter)	~ $\phi 6$	$\phi 6 \sim \phi 15$	$\phi 3 \sim \phi 10$	$\phi 7 \sim \phi 13$
Riveting force	MAX 8KN	MAX 30KN	MAX 15KN	MAX 20KN
Hydraulic pump discharge pressure	—	—	MAX 7Mpa	MAX 7Mpa
Spin head stroke	0~50	0~50	0~50(70)	0~50(70)
Punch insert diameter	$\phi 12$	$\phi 20$	$\phi 16 \cdot \phi 20$	$\phi 16 \cdot \phi 20$
Motor	0.2kw	1.5kw	0.4kw	0.75kw
Motor speed	1800rpm	1800rpm	1800rpm	1800rpm
Air consumption (NL/cycle)	9	11	—	—
Air supply pressure (MPa)	0.5	0.5	—	—
Approx. weight of riveter	50kg	145kg	55kg	60kg
Approx. weight of hydraulic package <small>Not including hydraulic fluid and manifold block</small>	—	—	45kg	45kg



MIRA Spin Riveting Machine

### Equipment example

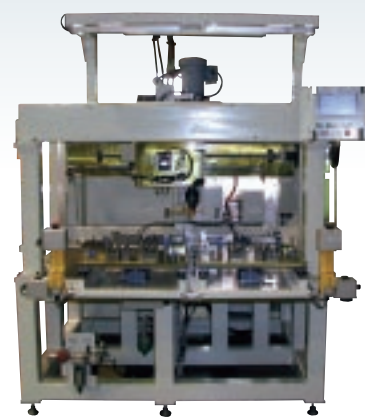
With an abundance of experience and know-how for automated equipment and automatic assembling machines, we are ready to support you starting from the planning and designing stage. Feel free to contact us.



Release pin riveter



Location pin riveter



Servo X-Y riveter

Engineer group for designing and manufacture of presses, automated equipment, and assembling machines



<http://www.miratech.co.jp>

### Technology Center

36-1, Akitanishigomae, Oguchi-cho, Niwa, Aichi 480-0132 JAPAN  
TEL: 0587-95-8811 FAX: 0587-95-8817

### Akita Office

322, Aza-Kitsunemori, Toyoiwaoyama, Akita City, Akita 010-1653 JAPAN  
TEL: 018-828-6211 FAX: 018-828-4811